



# Shopfronts

A wide range of shopfronts and doors are produced to meet all types of architectural requirements for both Export and Home use and in a number of different finishes.

We have for some years specialised in unusual shapes including radiused and scalloped corners and your enquiries are welcomed.

## Specification

### Materials:

Aluminium shopfronts are produced in 6063 T5 alloy. T4 alloy is used if shopfront sections are required to be curved or rounded.

### Finishes

Shopfronts can be supplied in 20 or 25 micron anodic films for external use and 12 or 15 micron finish for internal use.

Clear, light bronze, dark bronze and black anodised finishes can be supplied. Gold anodising should preferably be applied to a chemically electro brightened surface to achieve a high quality finish. Particulars, because of tank sizes, should be discussed with us when specifying this finish.

Electrostatic Polyester powdercoating finishes can be supplied in a number of colours. External colours which are relatively light fast are set out in our Colour Brochure.

Duranar and XL Exotic Coatings will be available from February 1989. This very long life Fluoropolymer coating based on Kynar 500. Resin can be supplied in a large number of computer co-ordinated colours and is the most suitable finish for high quality Prestige work.

### Sections:

75mm deep and 100mm deep sections are the commonly used sections. 150mm sections can be supplied given sufficient lead time.

### Construction:

All shopfronts and doors are mechanically jointed with stainless steel screws and fittings — where exposed, sill trays are automatically fitted.

### Doors:

Capri doors into any of the Suites may be: —

*Side Hung* with stainless steel hinges.

*Pivot Hung* on either Floor Springs or Overhead closers.

*Automatic Sliding or Pivotted* these doors are automatically fitted with Panic Break-out or Fail Safe mechanisms.

*Sliding Doors* on Overhead tracking or bottom rollers.

*Vertical Lift* counterweighted.

*Armour Plate Doors* on floor springs or with patch hinges may be used in lieu of Capri doors.

*Revolving Doors*: manual or automatic and collapsing.

### Furniture:

Unless specified otherwise, standard Lockwood Lock sets are fitted to all doors and, with doors on closers, Standard Pull & Push handles 300mm are fitted.

All types of locks can however be fitted including card controlled electronically operated locks but must be specified with enquiry.

Face mounted or integral crash rails may be fitted including Formica faced, metal faced or tiled with mosaics. Our standard crash (vision ) rail is 150mm.

Coats of Arms, names or castings may be incorporated in all types of crash and vision rails.

Stainless steel tube full length handles or special handles may be requested.

### Glazing:

Any type of glass from 4-28mm can be used and must be glazed on packing blocks and with EPDM pressure gaskets and wedges.

### Fixing:

It is normal for Thermosash to fix their own shopfronts and doors but they may be supplied for fixing by contractors or other specialists.

### Options:

Opening sashes may be fixed above doors or above transoms in shopfronts.

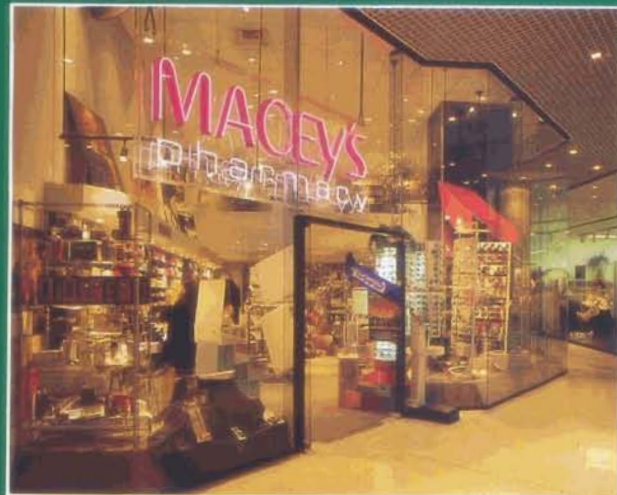
Awning or sliding sashes are preferable to louvres. These may be gear operated if required.

### Drawings:

Detailed drawings will be prepared when necessary for confirmation of building in details and for establishment of working sizes for both export and local usage.

### Guarantee:

All finishes and construction carries a 2 year guarantee for workmanship and materials. Proprietary locks, floorsprings and closers carry the suppliers guarantee.



AUCKLAND HEAD OFFICE AND FACTORY:  
P O BOX 100-340 NSMC AUCKLAND, NEW ZEALAND  
PHONE 09-444 4944 FAX 09-444 4886  
email: [admin@thermosash.co.nz](mailto:admin@thermosash.co.nz)

WELLINGTON OFFICE AND FACTORY:  
P O BOX 38-645 WELLINGTON, NEW ZEALAND  
PHONE 04-939 4500 FAX 04-939 4499  
email: [tlwgt@thermosash.co.nz](mailto:tlwgt@thermosash.co.nz)

CHRISTCHURCH OFFICE AND FACTORY:  
P O BOX 313 CHRISTCHURCH, NEW ZEALAND  
PHONE 03-348 4004 FAX 03-348 4088  
email: [tlchch@thermosash.co.nz](mailto:tlchch@thermosash.co.nz)