

THERMOSASH

Unitised Facades

TOTAL CLAD SOLUTIONS



Thermosash
BUILDING ENVELOPE SOLUTIONS™

Thermosash Commercial Ltd

158 Central Park Drive, Henderson
Auckland 0610, New Zealand

www.thermosash.co.nz

Thermosash Thermal Break

- PW1000 TB160 / TB200
Structurally glazed Thermal Break
High Performance Unitised Curtainwall
- PW400TB-160
Mechanically glazed Thermal Break
High Performance Unitised Curtainwall

Thermosash Systems

- Acoustic & Acoustic secondary glazing systems
- Twin Skin systems
- Thermal Break systems
- Seismic systems
- Structural Glass Assemblies

Rainscreen Materials

- Aluminium
- Terracotta
- Glass
- Large Format Porcelain
- Zinc
- GRC
- Stainless Steel

Our Unitised Systems offer the benefits of local off-site fabrication, modern construction techniques, and near limitless design possibilities...

bringing your boldest architectural visions to life whilst delivering practical benefits such as speed of installation, reduced risk, just-in-time site delivery, and single point warranty.

Shape the future of urban design and aesthetics with a high performance Thermosash Unitised Facade solution. We have five decades of building envelope experience to bring to your table.

Our Aluminium is green to the core.

Thermosash is partnered with the lowest embodied carbon NZ-owned extruder in the world*.

The combination of high recycled content and low carbon virgin material forms the super-low embodied carbon high quality extrusion that Thermosash uses.

* Achieving Toitū Carbonreduce certification which significantly outperforms the global average. (Independent audits to stringent European standard PAS 2050 are regularly undertaken, please contact us for the most up to date carbonreduce CO2e/kg of aluminium figures).

Thermosash recycles 100% of all metal waste products produced during manufacturing operations.

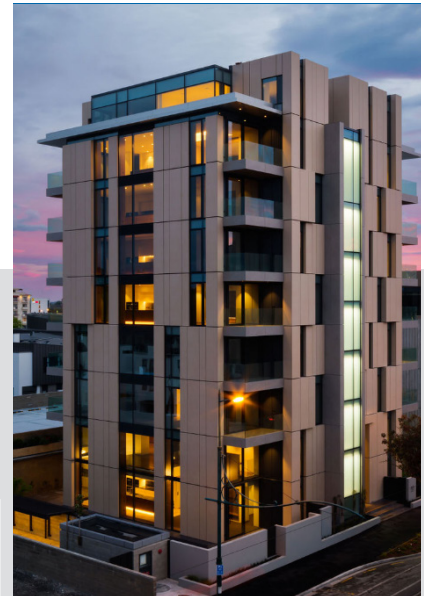
We exclusively use local powder coaters who have stringent chemical handling processes and reuse or responsibly dispose of all waste powder.



Spark HQ
CHRISTCHURCH



School of Science 302
UNIVERSITY OF AUCKLAND



Armagh Str Apartments
CHRISTCHURCH

THERMOSASH UNITISED FACADE SOLUTIONS

Thermosash excels in the design and delivery of specific engineered prefabricated façades. Our team's commitment to meticulous engineering ensures that each project, from concept to construction, meets structural and environmental loading, ensuring the high performance facade solution is code compliant, buildable and warrantable.

Thermosash stands out as the exceptional choice for handling any commercial sector project from low-rise structures to towering high-rise applications with low complexity facades to highly complex engineered features, as well as features that have never been undertaken in New Zealand. We have the knowledge and expertise to push the boundaries in design.

Our vast manufacturing capacity, cutting-edge technology, and in-house engineering enable us to tackle multiple projects concurrently while maintaining precision and quality. We offer a 10-year warranty on our unitised façade systems, demonstrating our confidence in the quality and durability of our products and our commitment to long-term performance.

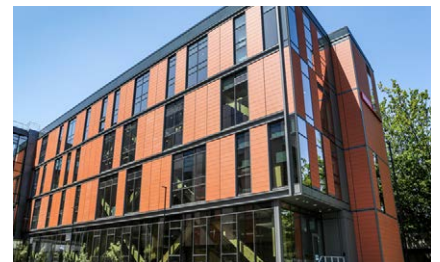


Project Experience

As a 100% New Zealand-owned and operated company for over 5 decades, Thermosash has played a pivotal role in turning architectural concepts into buildings that enrich the cities across the country. In response to New Zealand's seismic considerations and advancements in maintenance-free materials, we've developed, tested and installed hundreds of lightweight, fully integrated metal/glass cladding systems that stand the test of time. Below are a few examples of projects we have delivered in recent years.

BEATRICE TINSLEY BUILDING - UNIVERSITY OF CANTERBURY

The building forms part of the university's science precinct and has been constructed with a LVL timber structure and our high performance Thermosash PW1000 unitised curtainwall integrated with terracotta tile cladding.



SOCIAL SCIENCES BUILDING B201 - UNIVERSITY OF AUCKLAND

The existing 50 year old concrete clad building was reclad with our low-carbon high performance PW1000 unitised curtainwall integrated with our Thermoplank Unitised Rainscreen on the North & East Towers. The podium is PW1000 unitised curtainwall with IGU glazing integrated with external vertical fins.



HOLIDAY INN REMARKABLES PARK - QUEENSTOWN

The five storey, 182-room hotel has a mixed use ground level with retail and restaurant facilities.

Above ground level the installation includes our Thermosash PW1000-TB160 unitised thermal break suite incorporating thermal break sliding doors and vertical and horizontal shading elements. The ground level includes our Thermosash PW400 unitised curtainwall and rainscreen cladding.



QUEST HOTEL TAKAPUNA - AUCKLAND

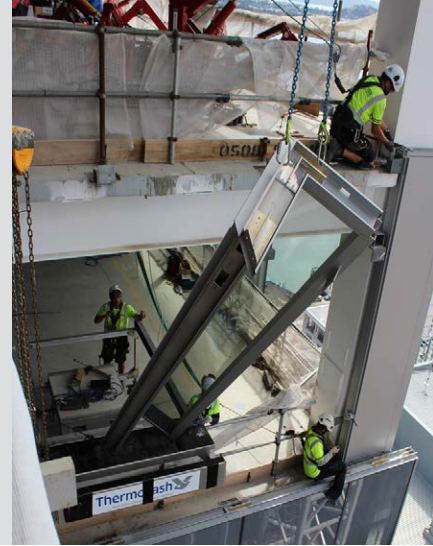
The Quest Hotel is a 5 storey building featuring Thermosash PW1000 structurally double glazed unitised curtainwall integrated into porcelain stone tiles and double blade louvres all above the ground level.

The ground level is closed in with our PW400 unitised curtainwall and frameless glazing.



PREFABRICATED UNITISED SYSTEMS STREAMLINE CONSTRUCTION

Unitised facades and the Rainscreen Assembly with Barrier (RAB) or similar represent distinctly differing methodology approaches to building exterior facade systems. Thermosash specialise in prefabricated unitised facades which have definite advantages over constructing using an air/moisture barrier fixed to a build up of framing especially on large commercial projects where quality, precision and construction programme time are critical factors.



Unitised vs RAB or similar methodology

WHILE THE INITIAL MATERIAL COSTS FOR UNITISED FACADES MAY BE HIGHER, THE OVERALL COST SAVINGS FROM REDUCED LABOUR, SHORTER CONSTRUCTION TIME, BETTER QUALITY CONTROL AND PRECISION, HIGHER PERFORMANCE AND LOWER LONG-TERM MAINTENANCE MAKE UNITISED FACADES A MORE COST-EFFECTIVE CHOICE OVER THE LIFE OF THE BUILDING COMPARED TO RAB OR SIMILAR CONSTRUCTION METHODOLOGIES.

PERFORMANCE & QUALITY

PREFABRICATED UNITISED SYSTEMS

- Thermosash unitised systems are engineered to meet seismic, climate and building importance level demands unique to each site - offering high performance solutions.
- The unitised systems are designed to incorporate a variety of cladding materials: GRC, terracotta, zinc, porcelain stone etc.
- Engineered and prefabricated integration of insulation, glazing, and other components into a single unit, providing better thermal and acoustic performance. The factory-controlled environment ensures these elements are exactly sealed and aligned.
- The factory environment allows for quality assurance control at all stages of the manufacturing process.
- The high-quality of materials, precision manufactured units and experienced install teams lead to a high performance energy efficient facade providing quality interior comfort, with lower maintenance costs over the life time of the building.

RAB OR SIMILAR

- Performance and quality of the end as-built system is dependant on precise detailing in design and construction - weather conditions, the quality of the supplied materials and handling on site, and on-site workmanship and capabilities are risk factors.
- Precise integration of components is dependant on the capabilities of the various trades.
- There is a higher chance of inconsistencies or defects occurring. Defects in the barrier installation or through poorly or unsealed penetrations can lead to moisture-and air leaks.
- Incompatible materials can cause gaps, cracks, or delamination, which can compromise the system's integrity and allow water infiltration.
- Thermal bridging can lead to localized areas of heat loss, condensation, and reduced overall thermal performance of the building envelope, potentially resulting in higher energy costs and discomfort for occupants.

CONSTRUCTION PROCESS

PREFABRICATED UNITISED SYSTEMS

- Reduced number of junctions with other trades if Thermosash engineers, manufactures and installs the building envelope elements.
- Just-in-time delivery coordination with installation team reduces clutter on site and the need to store materials.
- Reduced number of council inspections during construction and possible delays, saving on compliance costs. Thermosash has an in-house approved producer statement author.
- Fabrication continues during inclement weather conditions, reducing site delays.
- Thermosash takes responsibility and the risk for the installed facade solution offering a 10 year warranty with maintenance compliance conditions.

RAB OR SIMILAR

- Multiple trade responsibilities for the design, working drawings and Producer Statements of the various components.
- On-site assembly with all materials brought to site and the facade is built incrementally - requiring site storage and significant on-site labour and co-ordination between trades.
- Follow on trades can be negatively impacted by Council compliance pathway from different subcontractors - sign off and fixing of defects is required before proceeding to next installation sequence - and must be site managed/supervised by the Main Contractor.
- Inclement weather can negatively impact installation and cause delays.
- No clear line of responsibility for the 10-year warranty risks when using different trades if the end as-built product is found defective.

SPEED OF INSTALLATION

PREFABRICATED UNITISED SYSTEMS

- The modular nature of the unitised products, which fit together like a Lego assembly, enable the rapid closing in of a building saving on programme time.
- Reduction in scaffold and crane requirements.

RAB OR SIMILAR

- The on-site assembly of each component can be time-consuming leading to slow installation and longer construction time frames.
- Scaffolding and cranes are often required for these types of installations.

PREFABRICATED UNITISED SYSTEMS WITH SEAMLESS INTEGRATION

A key advantage of our Thermosash engineered unitised suites is the ability to integrate elements seamlessly, reducing junctions between trades which significantly increases on site productivity, and reduces construction programme time frames.

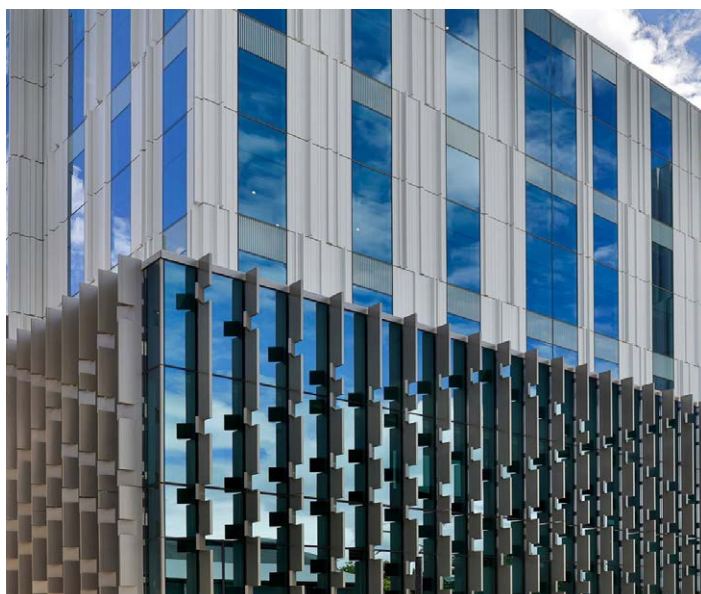
A large variety of materials can be accommodated and additionally the brackets required for solar shading, signage, downpipes and other ancillary projections can in most cases be fixed to the facade panels with no additional structure required and without compromising weathertightness.



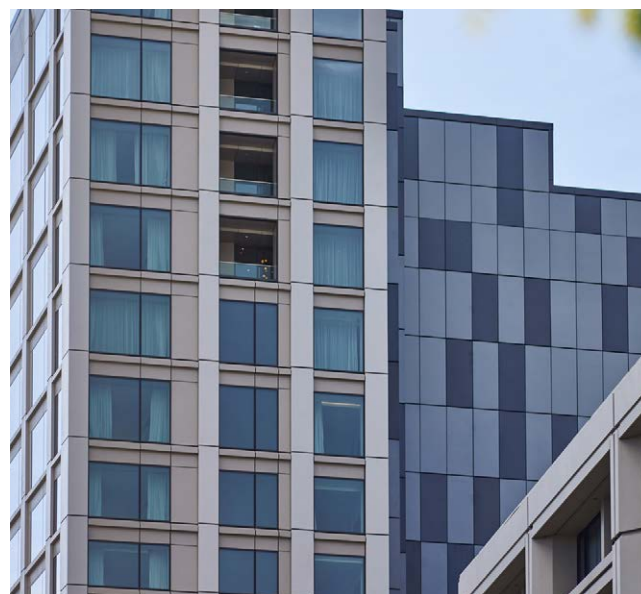
Prefabricated Thermosash Thermoplank unitised rainscreen, packed for transport to site.



Taranaki Base Hospital Extension - under construction with High Performance PW100 unitised curtainwall integrated with Thermoplank unitised rainscreen.



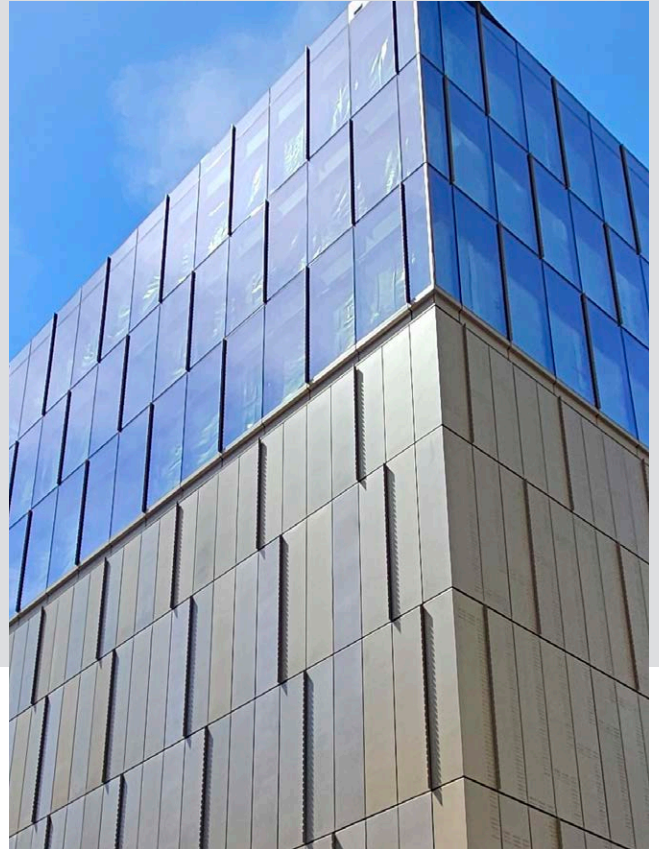
University of Auckland B201 - PW1000 unitised curtainwall integrated with vertical solar shading, and to upper level with Thermoplank.



Cordis Hotel, Auckland - PW1000 unitised curtainwall and embossed powdercoated solid aluminium panels to match the original hotel facade.



Detail of the prefabricated unitted embossed aluminium panels installed on the National Archives building in Wellington.



The new National Archives building in Wellington is being constructed with a Thermosash PW1000 Thermally Broken unitted curtainwall compliant with BS/EU 16893 - a factor of 10 better air infiltration / exfiltration that NZS4284 compliance.



1 Enfield Street Apartments, Auckland - PW1000 integrated with architectural aluminium feature pressings



CAB Apartments, Auckland - unique folded metal cladding designed to match the original heritage fluting.



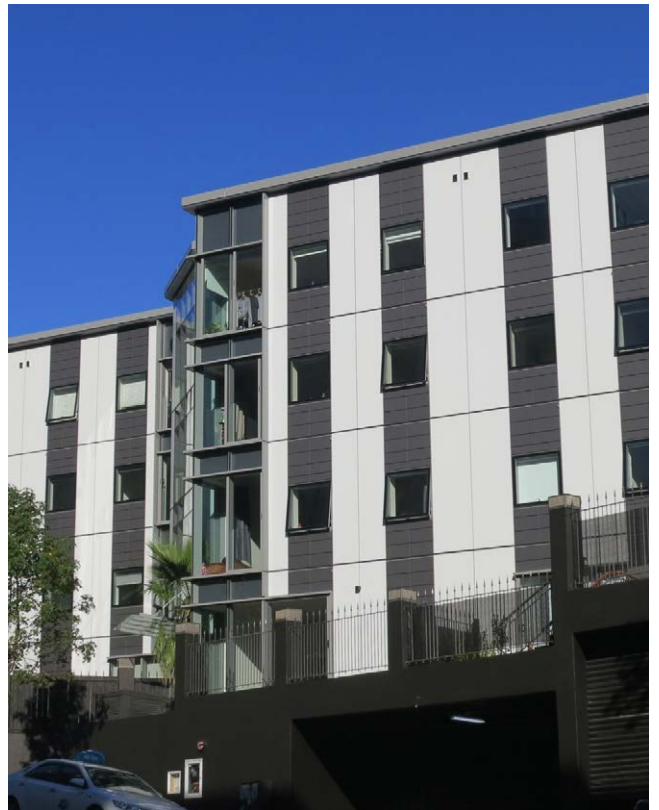
123 Victoria Street, Christchurch - PW1000 structural curtainwall integrated with horizontal aluminium louvres



UOA School of Science 302 - PW1000 unitised curtainwall integrated with aluminium feature chevrons to upper podium, and incorporating glazed and Zinc clad integrated panels and Zinc clad feature fin projections to upper tower.



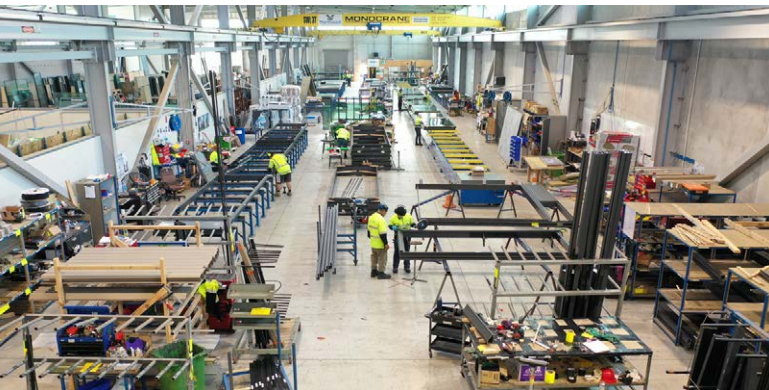
Armagh Apartments, Christchurch - PW100 suite integrated with large format porcelain panels.



Columbia Apartments, Auckland - PW1000 suite integrated with terracotta tiles and ACP cladding.

THERMOSASH CAPABILITY & CAPACITY

Thermosash has experienced engineering, CAD design, QS, procurement, manufacturing, logistics, project & site managers and install teams who collectively through teamwork, shared knowledge, experience and innovation deliver project after project. Our manufacturing facilities in Christchurch, Wellington, Levin and Auckland, as well as our subsidiary Thermosash Group companies; Woods Glass, Insite Façades, WEC and Thermosash Service & Maintenance collectively have c. 650 full time staff. This group resource base enables us to machine and assemble on average 17,000 unitised panels per year with our current work force.



Thermosash Levin Factory assembly and glazing lines.



Thermosash Henderson, Auckland CNC machining centre enclosed in a Thermosash PW1000 acoustic curtainwall.



Latter Day Saints, Auckland site installation - PW1000 unitised curtainwall with integrated glazing, aluminium louvre and non-vision panel.

INDEPENDENT TESTING

All the Thermosash suites are independently laboratory tested to IANZ (International Accreditation New Zealand).

Test certificates are available on request.

EARLY INVOLVEMENT ECI

The façade is a critical path trade, we offer value engineering and provide early design inputs and assistance with technical detailing. Forward planning of procurement, manufacturing needs and site installation management will greatly benefit your project.

- We provide value engineering - early involvement gives us the opportunity to improve project value through our experience and knowledge of our systems and products, offering you the best outcome.
- We can provide price & scope certainty with early involvement.
- We provide early design inputs and technical assistance saving variation costs
- We have an in-house high risk Producer Statement author which offers a streamlined consent process by providing higher level of detail to Council.
- ECI enables us to do forward planning and material procurement avoiding unnecessary delays
- We provide proactive management of construction risk for critical path trade

BENEFITS OF A THERMOSASH SOLUTION

Thermosash is a New Zealand based business and has been engineering and manufacturing specific design facade solutions across the country since 1973. We deliver solutions using our trusted and proven systems, offering increased value in terms of;

- 50 years of experience and expertise in the facade solutions industry in New Zealand
- ongoing trust within the industry
- high performance solutions
- durability of systems and longevity of product lifespan
- totally integrated service with ECI /ECE - engineering, producer statement generation, full shop drawings, manufacture and installation.
- design and detail to accommodate seismic loads and inter-storey differential movement, as well as wind loads
- Risk mitigation through one provider construction methodology and one warranty.

ISO Standards

At Thermosash, we place paramount importance on ensuring the highest standards in Health and Safety, Environmental, and Quality Management across our operations. In alignment with our commitment to excellence, we are in the process of obtaining ISO certification in these critical domains. Woods Glass (part of the Thermosash Group), has already established and successfully implemented these systems, serving as a benchmark for our broader implementation strategy.

The Thermosash Group, with each of its branches, is moving towards ISO certification, with Woods Glass leading the way. The three ISO standards that encapsulate our commitment are:

ISO 45001:2018 OCCUPATIONAL HEALTH AND SAFETY MANAGEMENT SYSTEM

Focused on ensuring a safe and healthy work environment for all our employees, clients, and collaborators.

ISO 14001:2016 ENVIRONMENTAL MANAGEMENT SYSTEM

Emphasizing our dedication to environmentally sustainable practices, minimizing our ecological footprint, and contributing to a greener future

ISO 9001:2016 QUALITY MANAGEMENT SYSTEMS

Ensuring that our processes consistently meet the needs of our clients and stakeholders, reflecting our unwavering commitment to quality.

DEDICATED HEALTH AND SAFETY AND QUALITY MANAGERS

Each Thermosash branch boasts its own dedicated Health and Safety and Quality Managers. These professionals are instrumental in the day-to-day implementation, monitoring, and continuous improvement of our Health and Safety, Environmental, and Quality Management systems. Their role is pivotal in ensuring that our operations align seamlessly with the rigorous standards set by the ISO certifications.

As we progress on this journey, we are confident that the implementation of these ISO standards will not only fortify our commitment to excellence but also underscore our responsibility towards the well-being of our employees, the environment, and the quality of our products and services. Our phased approach, with Woods Glass leading the charge, exemplifies our meticulous and comprehensive strategy in achieving ISO certification across the entire Thermosash Group.



INTEGRATED MANAGEMENT SYSTEM







OUR BRANCHES

AUCKLAND

158-164 Central Park Drive
Auckland 0610, New Zealand
PO BOX 100-340 North Shore,
Auckland 0745, New Zealand
09 444 4944

WELLINGTON

17-19 Marine Parade, Petone,
Lower Hutt 5012, New Zealand
PO BOX 38-645 Wellington Mail Centre,
Lower Hutt 5045 New Zealand
04 939 4500

LEVIN

13 Enterprise Drive,
Levin 5571, New Zealand
PO BOX 38-645 Wellington Mail Centre,
Lower Hutt 5045 New Zealand
06 949 1717

CHRISTCHURCH

12 Braeburn Drive
Hornby, Christchurch 8042
PO BOX 313, Christchurch 8140
New Zealand
03 348 4004

www.thermosash.co.nz
info@thermosash.co.nz

Thermosash are members of:



Brochure version August 2024

