



**Thermosash**   
BUILDING ENVELOPE SOLUTIONS™

Total Vision Structural Glass



# Structural Glass

**Total vision systems are frameless glass assemblies where the glass is taking some of the structural load while providing greater transparency and light penetration. They are highly engineered structures requiring consideration for wind-loads, building movements, and other stress points to ensure strength and safety.**

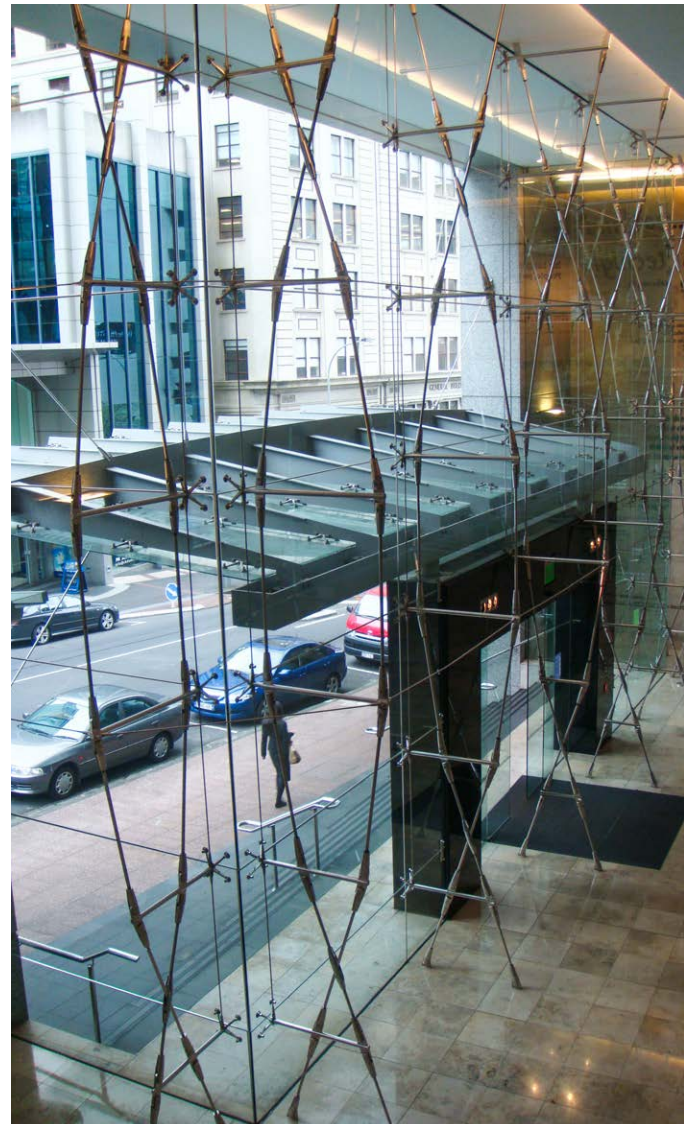
Thermosash, in partnership with Woods Glass, are the specialists in engineered structural glass assemblies and have completed some of the most iconic installations in New Zealand. Woods Glass utilise their extensive experience in sourcing proprietary fittings, glass and often high performance over sized glass, whilst Thermosash undertake the structural engineering and manufacturing. Glass size and primary structure support is your only limitation. We can source your specific glass requirements, including low carbon glass, and engineer a custom solution to meet your projects needs.

Thermosash and Woods Glass are part of the Thermosash Group of companies providing specific design building envelope solutions for commercial and multi-residential projects. Thermosash has over 50 years experience within the facade industry in New Zealand.

## Bow Truss Structural Glass Assemblies / Suspended Assemblies - project examples

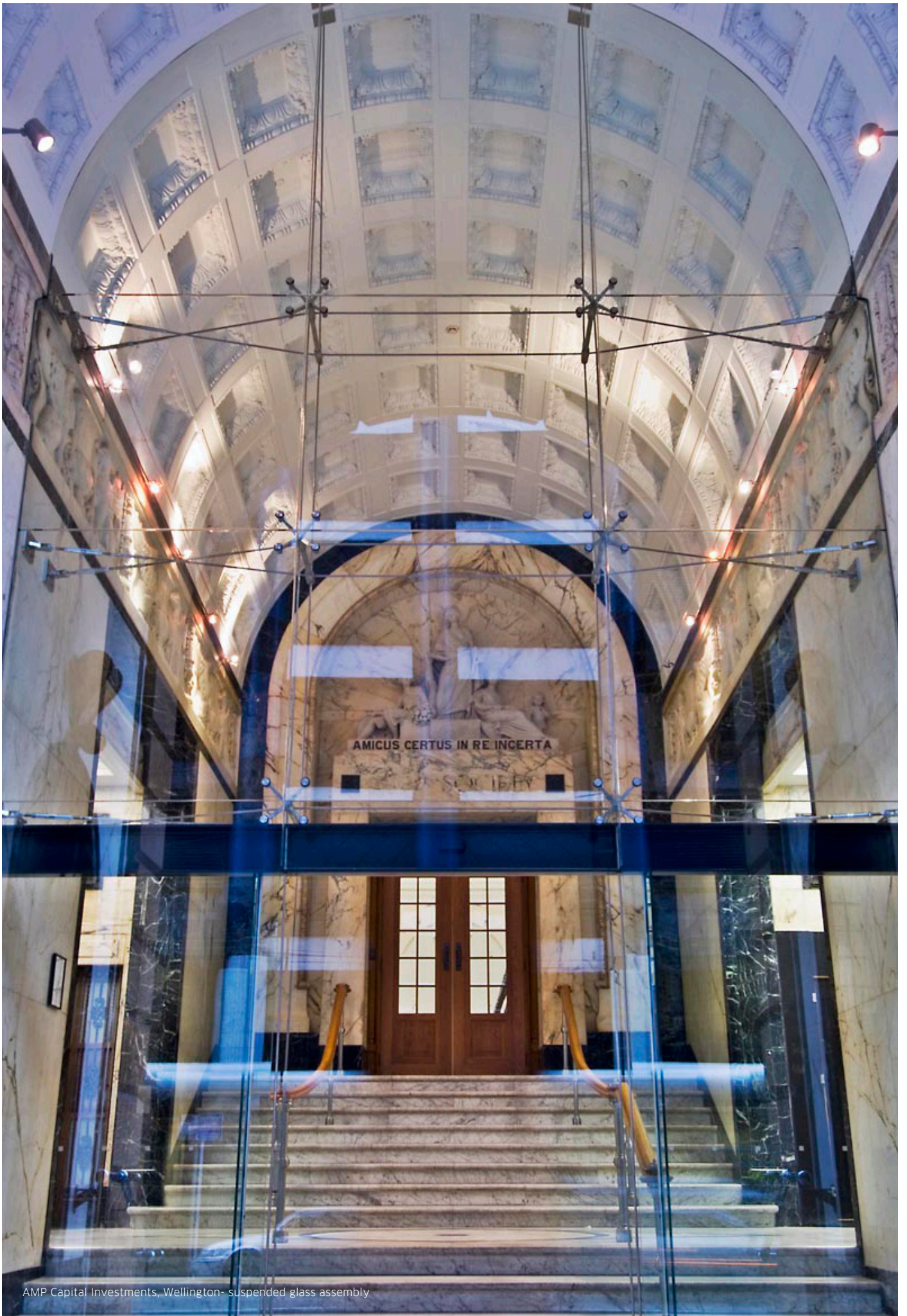


University of Auckland Business School - bow truss structural glass assembly to the main entry suspended from the support structure at the roof level.



Royal Sun Alliance, Auckland - bow truss structural glass assembly to the building entrance extending from the floor to the roof.





AMP Capital Investments, Wellington- suspended glass assembly





Jagged Edge, Queenstown - total vision structural glass assembly





Jagged Edge, Queenstown - total vision structural glass assembly



## Spider or Patch Fittings - project examples



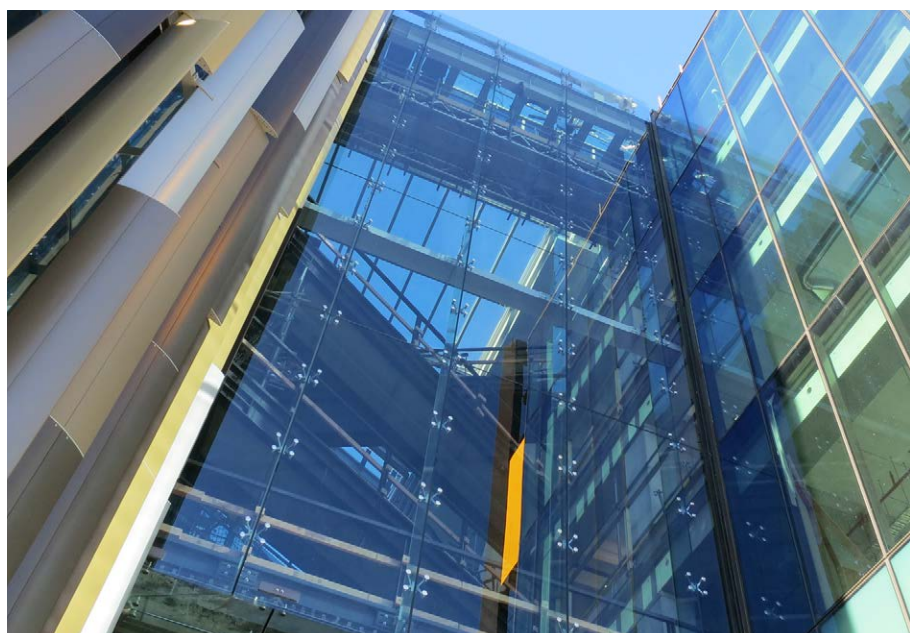
The Press Building, Wellington - completed prior to the 2021 earthquake features a double glazed spider fixed facade.



Westfield Newmarket, Auckland - structurally glazed pedestrian bridge with spider fittings.



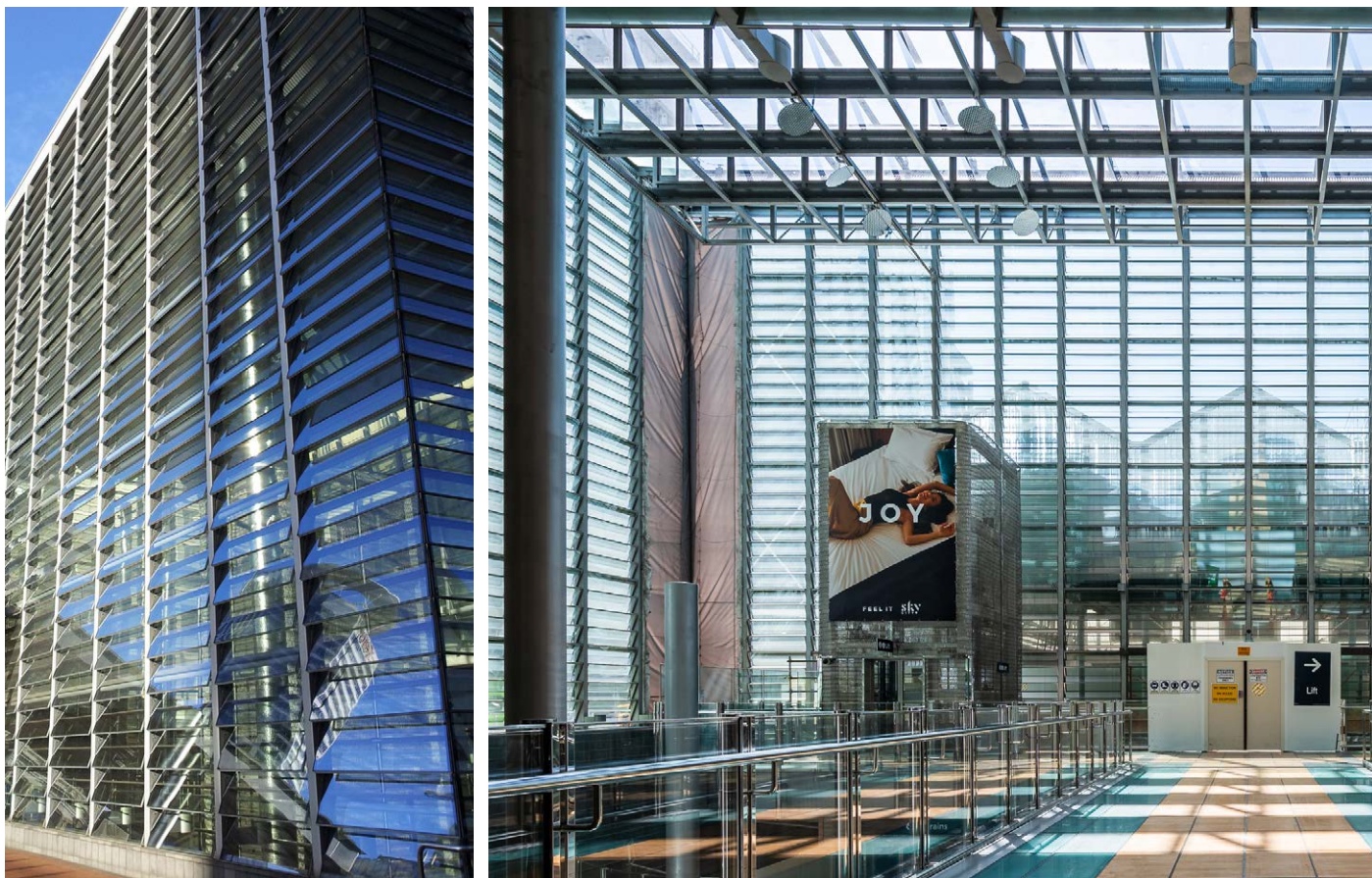
Jacobs ladder lift shaft, Auckland - structurally glazed with patch fittings.



ASB North Wharf, Auckland - structurally glazed frameless wall with spider fittings.



## Structural Glass Louvres - project examples



Britomart Waitemata Station, Auckland - features an impressive structural glass louvre facade.



University of Auckland, Thomas Building - structural glass louvres



University of Auckland, O'Rorke Hall - glazed louvres integrated with aluminium rainscreen.

**Thermosash Commercial Limited | [www.thermosash.co.nz](http://www.thermosash.co.nz)**

A Thermosash Group Company

**Auckland (H/O)**

158-164 Central Park Drive,  
Henderson, Auckland, 0610  
New Zealand

**P:** +64 9 444 4944

**Wellington**

17-19 Marine Parade,  
Pentone, Lower Hutt,  
Wellington, 5012  
New Zealand

**P:** +64 4 939 4500

**Christchurch**

12 Braeburn Drive,  
Hornby, Christchurch 8042  
New Zealand

**P:** +64 3 348 4004