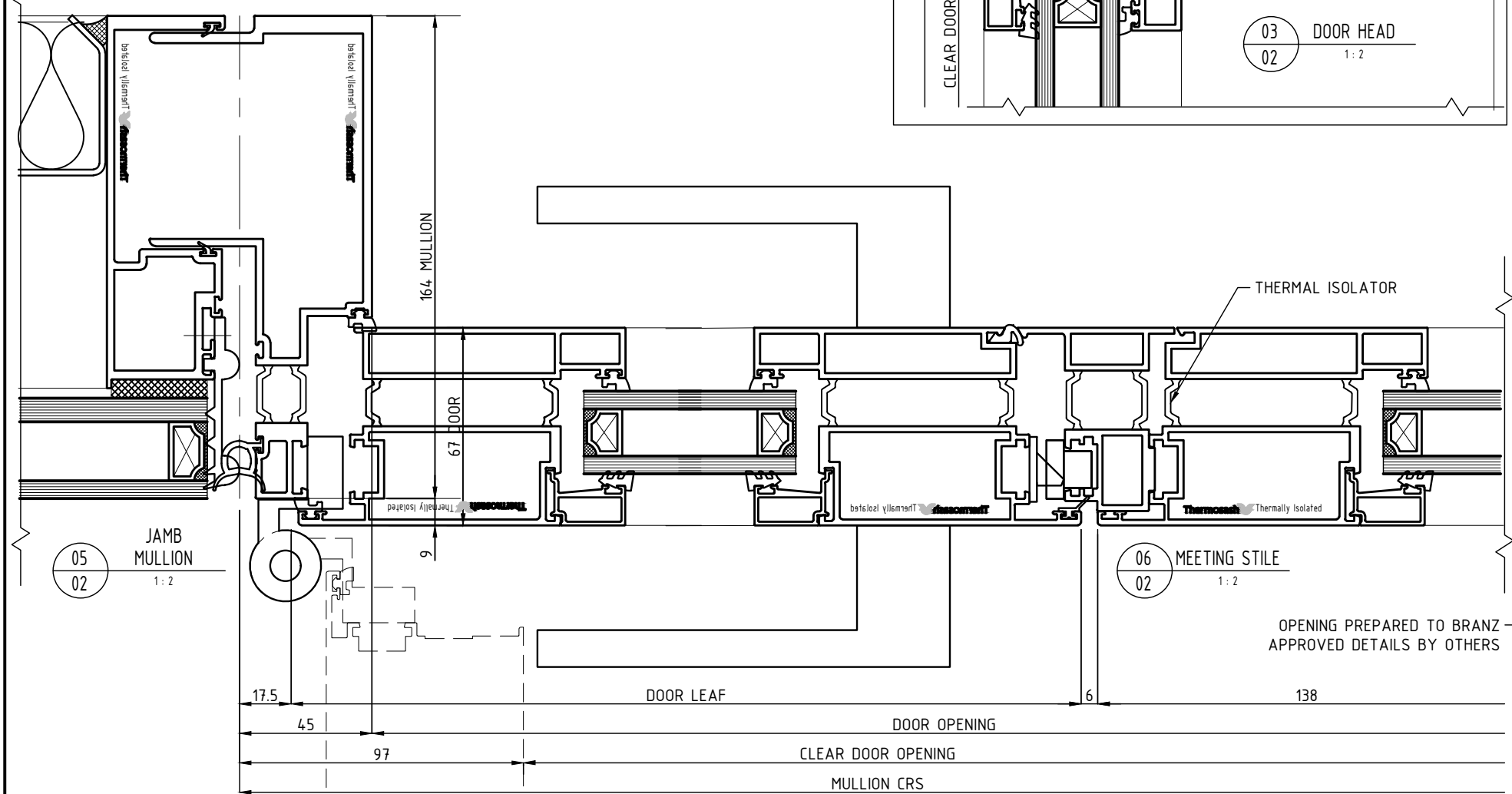
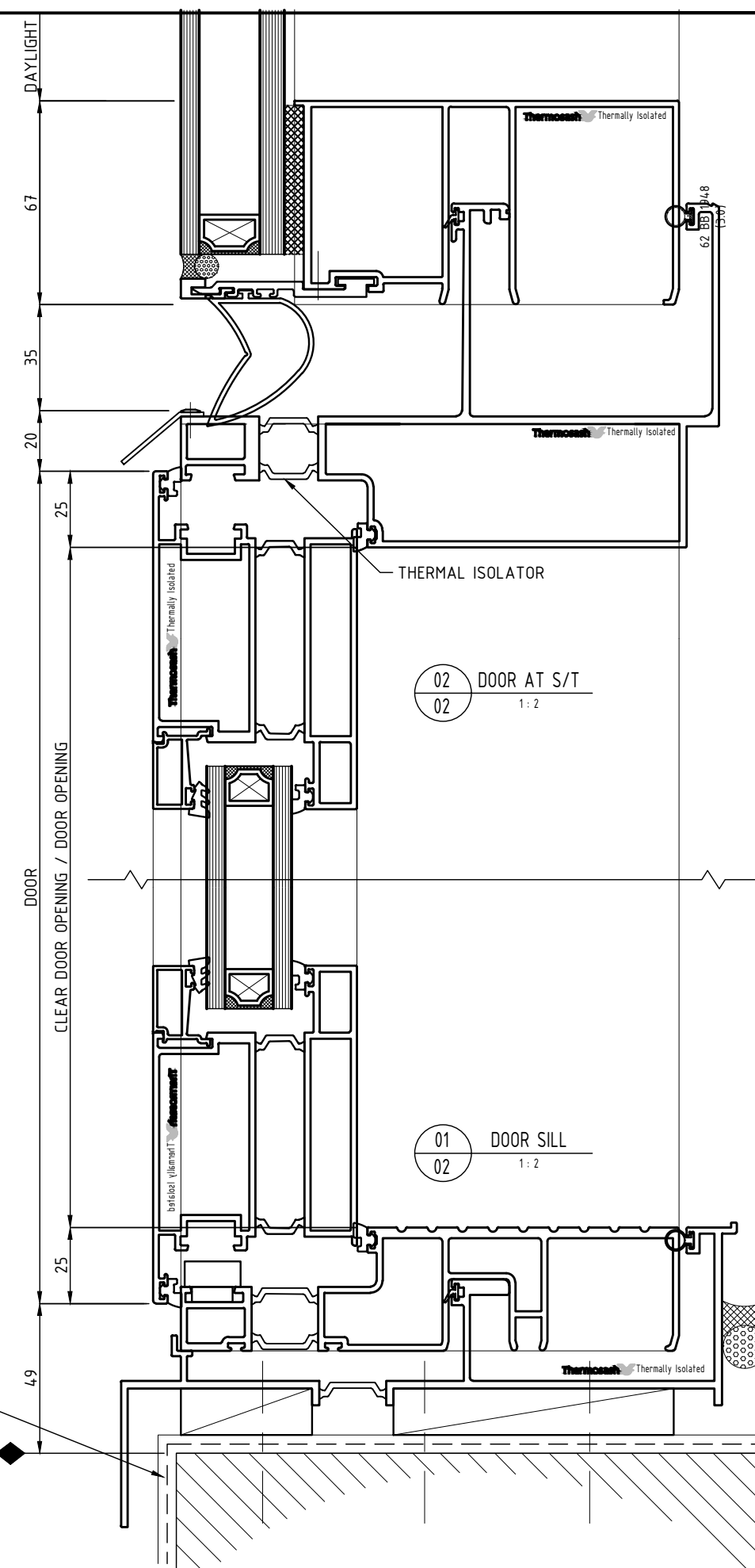
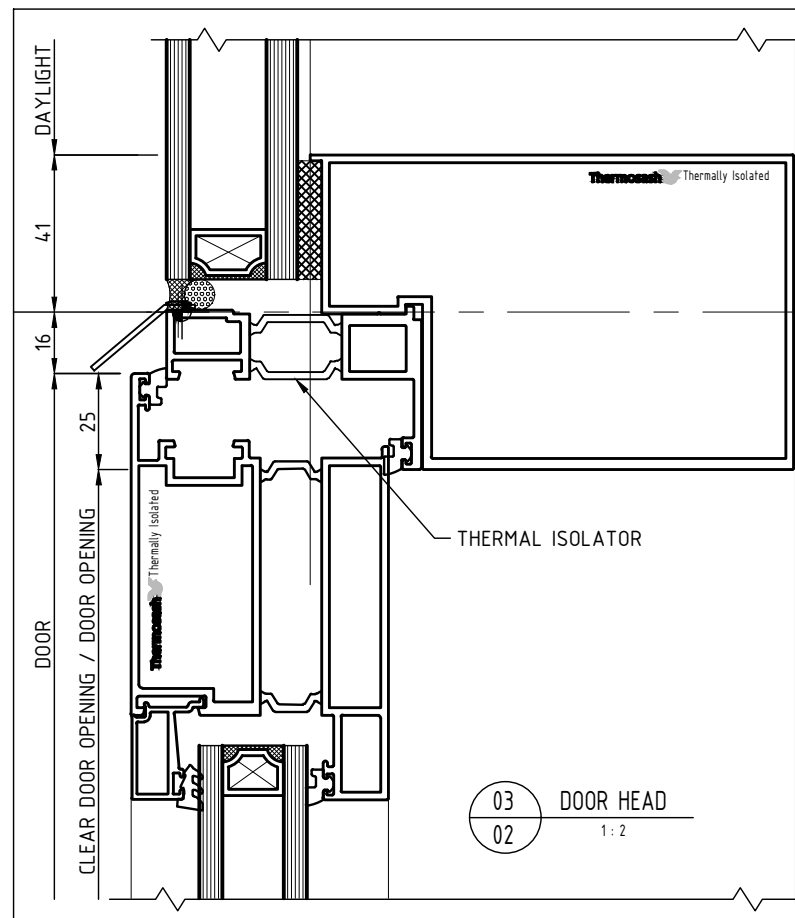
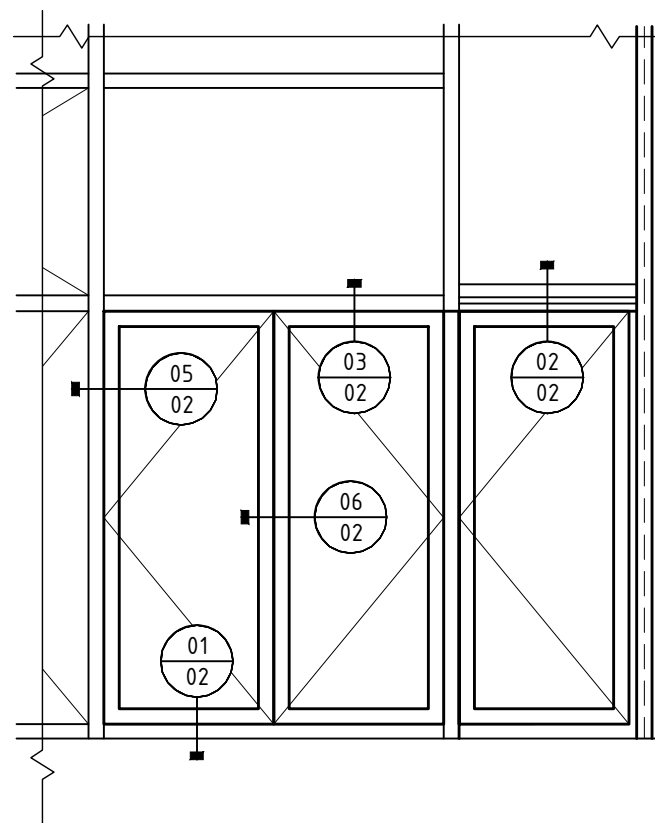


NOTES:  
 1) DRAWING TO BE USED IN CONJUNCTION WITH 'MASTERSPEC' (4211)  
 2) WINDOW SYSTEMS REQUIRE SPECIFIC DESIGN DEPENDING ON SPANS, WIND-LOADS, BUILDING CONDITIONS, ETC.  
 3) INSIDE GLAZE, INTERNAL REINFORCEMENT AND SEISMIC FRAME OPTIONS AVAILABLE

GLAZING: GLASS THICKNESS TO SUIT REQUIREMENTS  
 HARDWARE: STANDARD  
 HARDWARE OPTIONS  
 FINISHES: POWDER-COAT / ANODISED / PVF<sup>2</sup>



SYSTEM :  
 THERMALLY BROKEN PW1000  
 UNITISED HIGH PERFORMANCE  
 PANEL SYSTEM

TYPE :  
 160mm MULLION  
 DOUBLE GLAZED DOORS

SCALE:  
 NTS  
 DATE:  
 20-Apr-23  
 PAGE:  
 TB PW400-02

